



OUR
INTERNATIONAL
STAMPS / CANCELLED SEALS
BOOK 16



NUESTRO
LIBRO INTERNACIONAL Nº 16
DE
ESTAMPILLAS Y MATASELLOS

(Para) hacia una filatelia marginal creativa y paralela



(to) towards a marginal creative parallel philately

**armado en / gathered in
LA PLATA (ARGENTINA) 1987**

CO-IMPRESORES
CO-PRINTERS

DARLENE ALTSCUL

5711 Donna Ave.
Tarzana
Ca. 91356 - USA

VITTORE BARONI

Via Raffaelli, 2
55042 Forte Dei Marmi
(Lu) Italia

PATRICK BEILMAN

4731 N. Bartlett
Whitefishbay
Wi. 53211 - USA

GUILLERMO DEISLER

Thalmannplatz 12/1103
Halle 4020 - DDR

DOGFISH

3235 1/2 Fairview Ave.
Seattle
künstlerische
Wa. 98102 - USA

HARLEY

P. O. Box 268
Oberlin
Ohio 44074 - USA

RUGGERO MAGGI

C. so Sempione 67
20149 Milano
Italia

CARLOS PAMPARANA

Casilla de Correo 798
1900 La Plata
Prov. Bs. As. - Argentina

MARIAPIA FANNA RONCORONI

Via Campagnola, 27
Villorba (Treviso)
Italia

DON ROSE SELAVY II^o

Av. 7 N^o 546 - 2^o E
1900 La Plata
Prov. Bs. As. - Argentina

LON SPIEGELMAN

1556 Elevado St.
Los Angeles
Ca. 90026 - USA

PETER-JÖRG

SPLETTSTÖSSER

D-2862 Woroswede BRD
Barkenhoff

JAN VERSCHOORE

Oude Stad 64
4501 JC - Costburg

NEDERLAND

EDGARDO -ANTONIO VIGO

Casilla de Correo 264
1900 La Plata
Prov. Bs. As. - Argentina

TANA VIGO

Calle 15 N^o 1187
1900 La Plata
Prov. Bs. As. - Argentina

REID WOOD

State of Being
271 Elm St.
Oberlin
Ohio 44074 USA



STAMP



ROUND

ALTSCUL



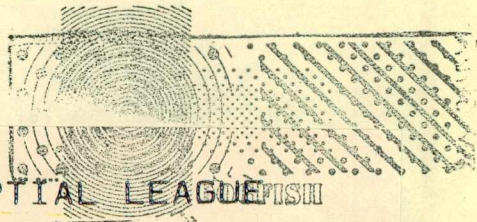
BARONI



BEILMAN

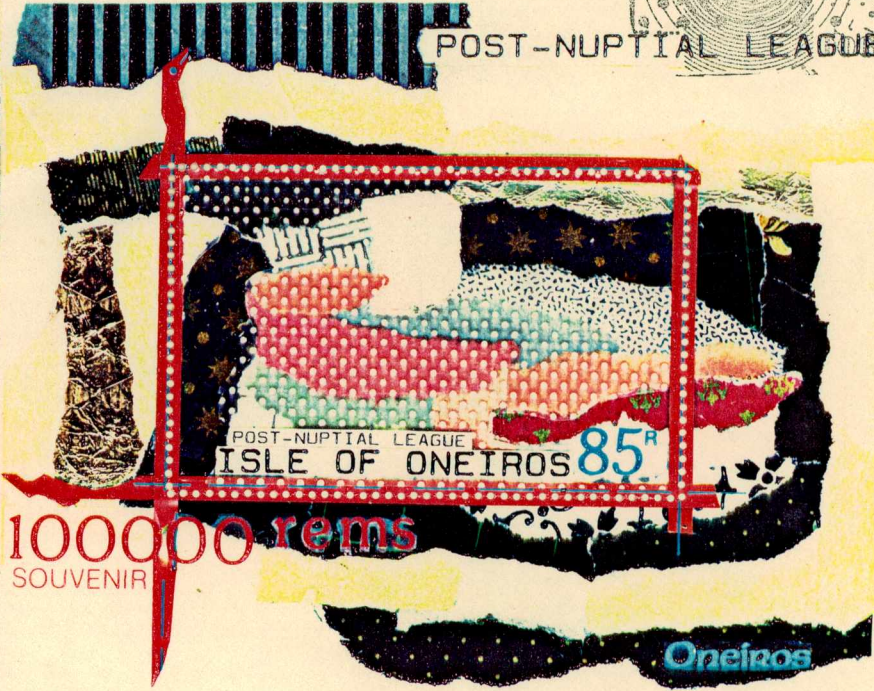
се изравняват г
развъжда при г
на израждане с
личество лопата
с увеличаване
Затога у нас с
до 4 лопатара,
го. При наличие
ду върху единица





FRIENDSHIP TREATIES ONEIROS - TERRA CANDELA

POST-NUPTIAL LEAGUE

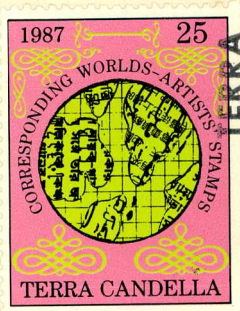


3. 2. 19. 1. 1964

100000 rems
SOUVENIR

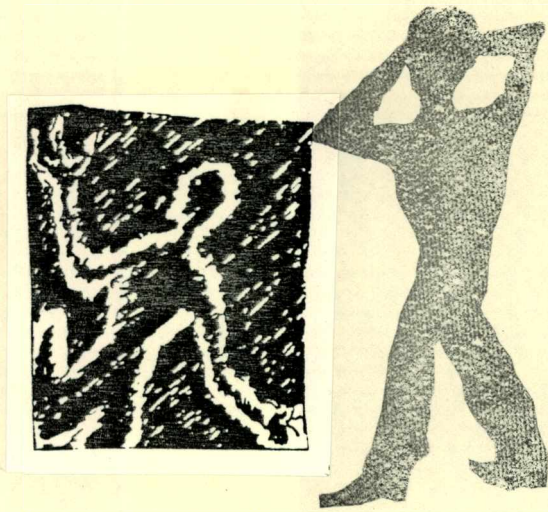
Oneiros

DOGFISH



CANDELLA
1984
ARGENTINA

HARLEY

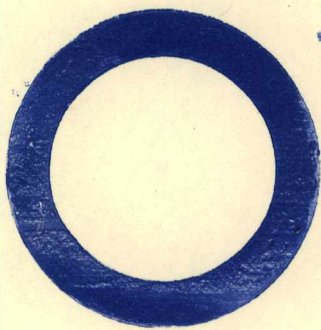
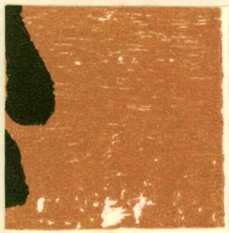


MAGGI



"LA LECCION DE ANATOMIA"
de CARLOS GREGORIO PAMPARANA

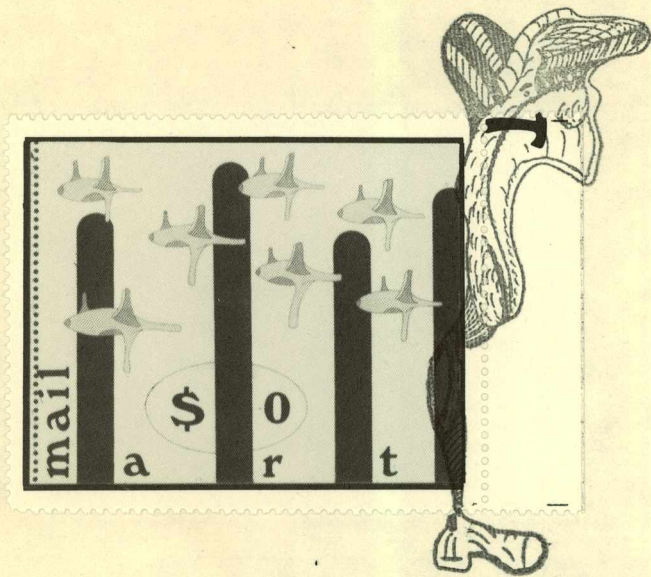
PAMPARANA



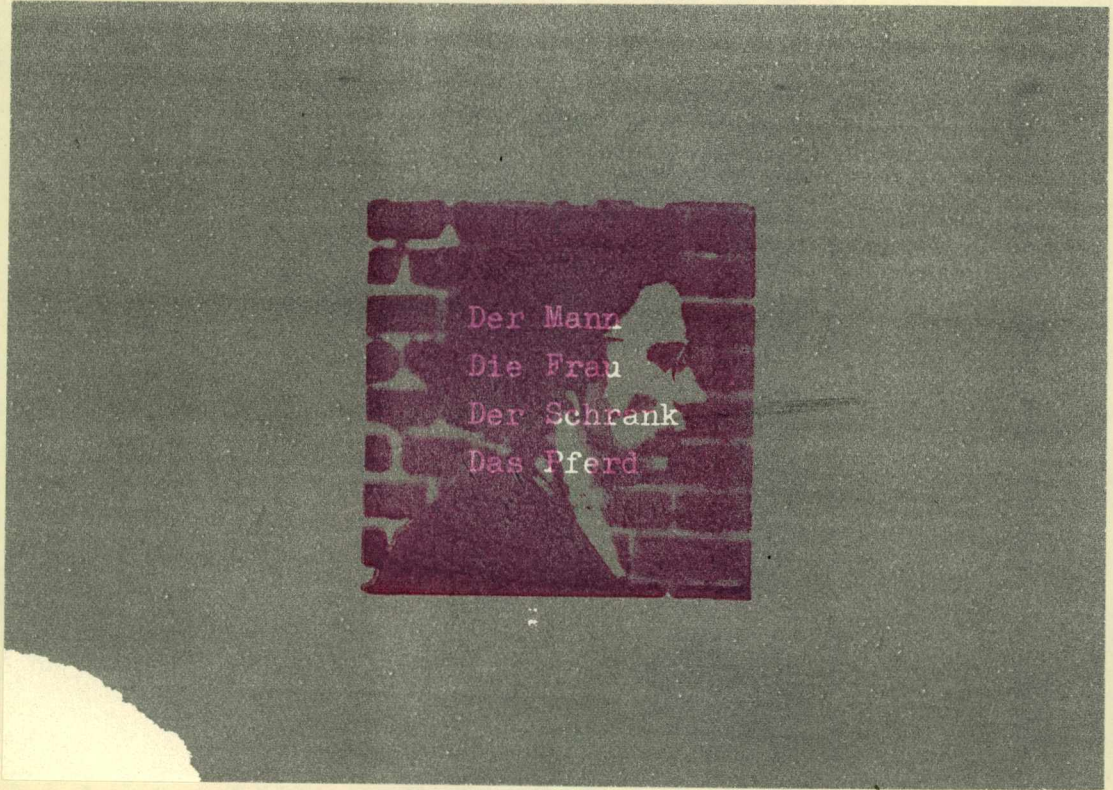
SELAVY II'



RON CORONI



SPIEGELMAN

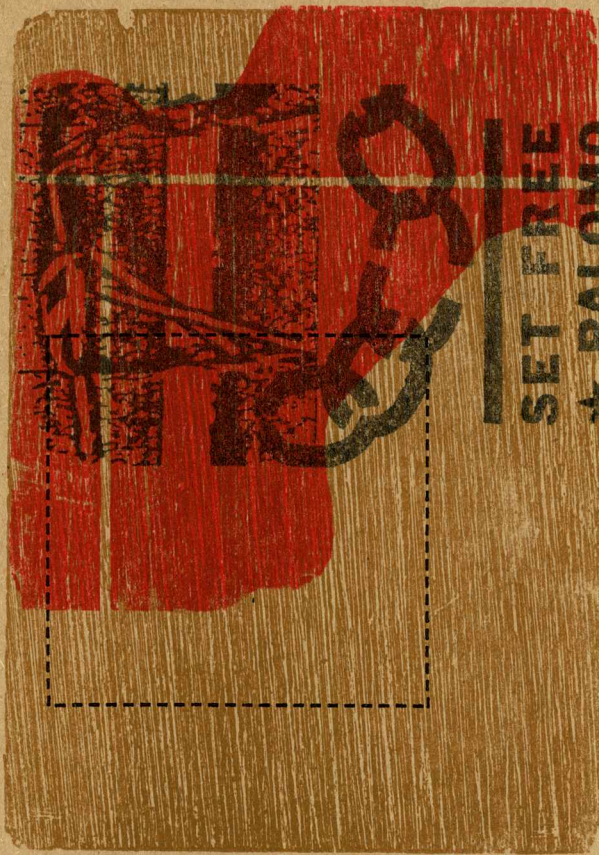


SPLETTSTÖSSER



VERSCHOORE

1976 - ABEL LUIS (a) PALOMO, VIVE - 1986



1976 - ABEL LUIS (a) PALOMO, IS ALIVE - 1986

EDGARDO -ANTONIO VIGO

Casilla de Correo 264

1900 La Plata

Prov. Bs. As. - Argentina

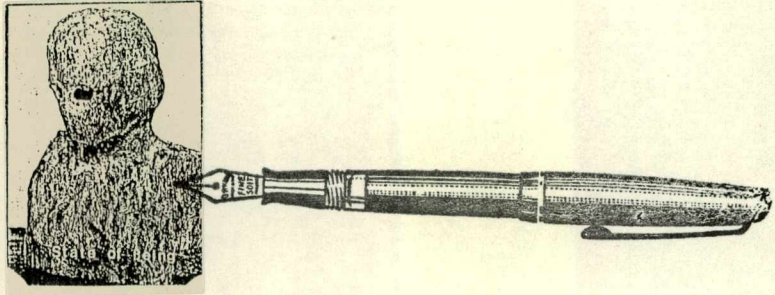


TANA VIGO

Calle 15 Nº 1187

1900 La Plata

Prov. Bs. As. - Argentina



WOOD